



Lexington-Fayette County Health Department Fiscal Year 2022 Annual Report

PUBLIC HEALTH MEETS PUBLIC ART



Burch included a special acknowledgement to Dr. Humbaugh hidden within the painting.



A colorful new mural greets guests, employees, patients and passers-by of the Lexington-Fayette County Health Department. The department joined artist Jeremy Burch, LexArts, Mayor Linda Gorton and community leaders in December 2021 to formally unveil the mural at 650 Newtown Pike.

The mural project began in 2019 but was delayed because of the COVID-19 pandemic. The department returned to completing the mural project in 2021 after Commissioner of Health Dr. Kraig Humbaugh announced his plans to retire at the end of the year.

“Dr. Humbaugh planted the seeds for this mural as a desire to update our building while also highlighting the importance of art and creation,” LFCHD spokesperson Kevin Hall said. “This mural celebrates the people who provide public health services to this community, as our mission says ‘helping Lexington be well.’ It also honors Dr. Humbaugh, not only for his initial idea but for helping lead this department throughout the pandemic. It’s a beautiful way to illustrate our values of caring, accountability, respect, equity and service.”

The health department selected Burch, a Lexington artist, to paint the mural following public input from the community.

“I have been doing art my whole life, from painting to music and film,” Burch said. “What I love most is creating things that evoke feelings and hearing how my art has made them feel. The piece I have created showcases bright, vibrant representation of Lexington along with its wonderful community and the LFCHD’s values that extend out to the community and not only within the LFCHD itself.”

The health department thanks LexArts for its partnership throughout the project, Marrillia Design and Construction for donating labor to install the mural and Mike Burrell at Flying Armadillo signs for use of studio space and assistance with the project.



COVID-19 RESPONSE HIGHLIGHTS

The COVID-19 pandemic response was the overriding focus and driver of much of LFCHD's activities during FY 2022. As the community lead for public health, LFCHD provided expertise and guidance through communications, clinical services, outreach/education and more to ensure the community had trusted information and access to available personal protective equipment, testing and vaccinations.

Strategies for risk reduction and virus control included early case investigation and isolation, quarantine of close contacts, behavior modification like physical distancing and mask-wearing, testing and vaccination. Highlights of the response through June 30 are as follows:

- From December 2021-February 2022 alone, LFCHD reported **40,773** positive COVID-19 cases in residents of Fayette County. This was due to the Omicron variant and accounted for the vast majority of our cases during the past year.
- **\$8.3 million** was spent on the response; **\$8.9 million** was reimbursed through federal aid. As of June 30, 20. However, as of June 30, 2022, net losses response to date were still **\$1.4 million**.
- LFCHD staff designed and supported a system for disease investigators, contact tracers and epidemiologists to record and track cases, communicate with cases and contacts and report data relevant for communicating with the public. Around **120** disease investigators and other staff were contracted at various times during FY 2022 to assist in the agency's epidemiology response to the COVID-19 pandemic.
- Early in FY2022, LFCHD staff continued to do intensive contact tracing with cases and their contacts.
- LFCHD moved to only doing case investigations and contact tracing in high-risk populations and congregate settings such as K-12 schools, child care centers, universities, long-term care facilities, homeless shelters, and jails.
- In collaboration with the Lexington-Fayette Urban County Government's (LFUCG) paramedics and volunteers from the Medical Reserve Corps, LFCHD administered **6,218** COVID-19 vaccinations between July 2021 and June 2022.
- In the fall of 2020, through a partnership with the Kentucky Department for Public Health, LFCHD implemented a COVID-19 rapid antigen testing program. Rapid testing kits and training were made available to community partners in congregate living settings and schools, in order to test symptomatic students and staff.
- In FY 2021, **3,092** COVID-19 rapid antigen tests were completed and reported through this initiative. In FY 2022, **12,089** rapid antigen tests were completed through this initiative.
- In FY 2022, LFCHD chose to sunset the PCR at-home testing strategy portion of the PCR program as federal funding decreased to support testing and there was increased availability of PCR testing in the community.



SOCIAL MEDIA

LFCHD continued to serve as a primary source of COVID-19 information for Fayette County. From July 2021 to July 2022, the health department's social media increased significantly.



16,368 followers to
17,305 followers



1,604 followers to
1,699 followers



5,398 followers to
5,722 followers

FLU VACCINATIONS

During FY 22, LFCHD provided a total of **1,310** influenza vaccines through the Public Health Clinic, homebound vaccinations, and community clinics, including **733** given during a free flu vaccine event in October 2021.



VACCINE PROMOTION

The department launched a "Get Vaxxed Y'all!" campaign to increase awareness on both flu shots and COVID-19 vaccines, using billboards, bus ads, doorhangers and online marketing to direct people to our Public Health Clinic.



SLOW COVID-19
&
FIGHT FLU!



www.lfchd.org
859-288-2483

Get

VAXXED

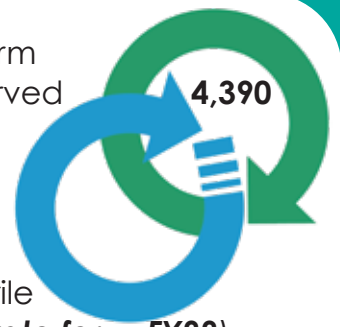
Y'all!

INFORMATION TECHNOLOGY

The department's information technology (IT) staff supported a call center with mobile phone app technology. LFCHD's COVID-19 call center responded to **13,499** individual calls from July 1, 2021, through June 30, 2022.

HARM REDUCTION

In FY 2022, LFCHD's Harm Reduction Program served clients during **17,972** participant visits, received **834,153** needles, and distributed **955,604** sterile needles (**87.3% return rate for FY22**). The program connected **91** individuals to treatment referrals.



LFCHD dispensed **4,810** naloxone kits, used to reverse opioid overdoses, free to community members at the Harm Reduction Program and at community events. Kits were funded through a SAMHSA grant award received by LFUCG. LFCHD received **\$96,000** in grant funding from the Centers for Disease Control and Prevention (CDC) and the Kentucky Injury Prevention and Research Center (KIPRC) to expand naloxone training and distribution to justice-involved individuals. In addition, these grantors provided **\$168,964** to support expanded naloxone distribution and education in the community to individuals in treatment facilities, the unsheltered, and people of color.

ENVIRONMENTAL HEALTH

Within Fayette County, Environmental Health (EH) staff provides regulatory inspections of all foodservice establishments, public swimming pools, hotels and motels, schools, tattoo and piercing studios, and grocery stores. This equates to over **6,000** field services. EH also investigates and monitors all animal bite reports and constituent-reported, health-related complaints. In addition, EH designs, permits, and inspects all septic system sewer treatment systems within the county.



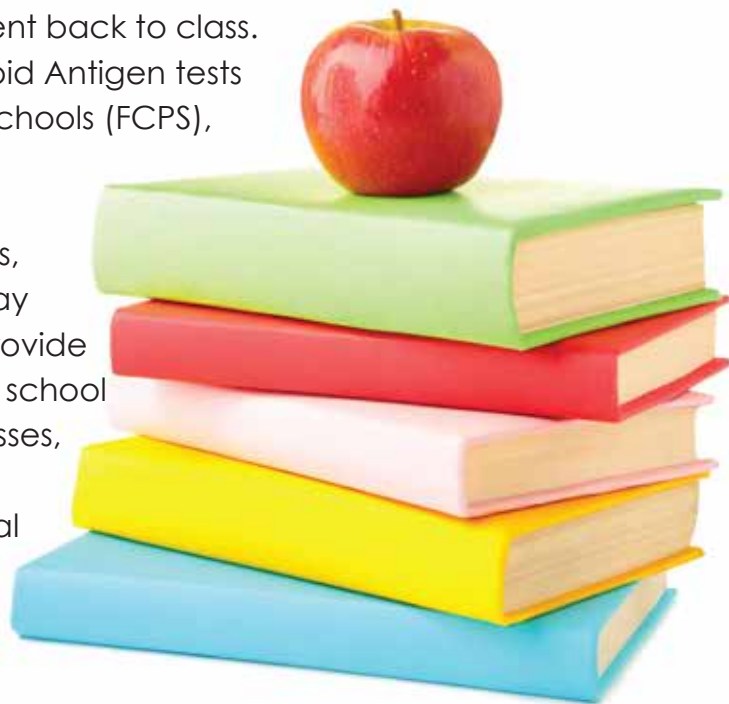
During this last fiscal year, EH instituted an online payment option for all annual permit fees. Roughly **25 percent** of all establishments paid their annual fees through this initiative, and staff worked to assist clients and assure that the process was completed relatively free of issues and/or delays.



SCHOOL HEALTH

During the 2021-22 school year, school nurses documented **50,558** health office visits, with **84 percent** of the student visits being sent back to class. Additionally, **2,315 BinaxNow** COVID-19 Rapid Antigen tests were performed in Fayette County Public Schools (FCPS), in which **10.6 percent** were positive.

The contract was also amended three times, once to collaborate with FCPS for Test to Stay for school related exposures, secondly to provide **14 nurses** to equal **1,995** additional summer school hours to help cover FCPS summer ignite classes, and lastly to increase staffing, allowing the placement of full-time nurses in **15** additional elementary schools.

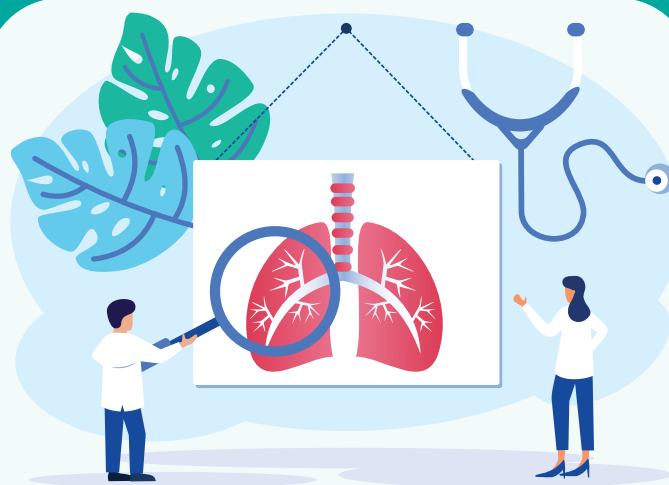


FACILITIES

In order to support future needs, the LFCHD facilities division collaborated with EOP Architecture and Babcon Inc. to install a new generator with the ability to provide power to the entire 650 Newtown Pike building. The previous generator capacity had been maxed with only select areas of the health department having backup generator power.

The facilities division was busy during FY 2022 continuing to improve the efficiency and effectiveness of an aging HVAC system, continuing internal improvements that include new flooring and paint, along with converting all lighting to a long-lasting LED system that not only uses less energy, but will not require replacement of bulbs for many years and has the ability to be put on a dimmer system for areas and staff that need a lower light level.

TUBERCULOSIS



From July 1, 2021, to June 30, 2022, **25** Fayette County residents diagnosed with active tuberculosis (TB) disease received monitoring and treatment via LFCHD's TB control program. During this time period, LFCHD clinic staff provided surveillance to **280** clients referred to the TB program for evaluation, management and treatment of TB disease vs. TB infection.

COMMUNITY HEALTH, EDUCATION & EQUITY

The LFCHD Community Health, Education and Equity (CHEE) Wellness Program collaborated a fourth year with the Kentucky Farm Share Coalition, Organic Association of Kentucky, and Elmwood Stock Farm to offer LFCHD staff a Community Supported Agriculture (CSA) produce subscription.

LFCHD contributed **\$6,300** for **28** vouchers, which helped defray costs for some of the **52** LFCHD staff who participated in the program.



H.A.N.D.S.

The LFCHD Health Access Nurturing Development Services (HANDS) program achieved **76 percent** of its home visit capacity in FY2022, exceeding the 75 percent goal set by the Kentucky Department for Public Health (KDPH).

Due to the COVID-19 pandemic, HANDS services evolved to meet the needs of the community through the addition of virtual home visitation.

Approximately **50 percent** of HANDS participants met virtually with LFCHD staff in FY2022.



WIC - Women, Infants and Children



The Women, Infants, and Children (WIC) program continued to offer services during the pandemic. Physical exemption waivers remained in place, which allowed all WIC services to be conducted over the phone, provided no other barriers to service existed. From July 2021 to June 2022, the program saw a slight decrease in the caseload from **6,062** to **5,828** participants. A new formula contract and individuals going back to the workforce in light of businesses reopening contributed to this decrease.

On Feb. 18, 2022, the WIC program was notified of a voluntary recall of Similac standard infant formulas as well as Alimentum and Elecare. Abbott initiated a voluntary recall of powdered formulas, including Similac®, Alimentum® and EleCare® manufactured in Sturgis, Michigan, one of the company's manufacturing facilities. The recall did not include any metabolic deficiency nutrition formulas. Abbott voluntarily recalled these products after four consumer complaints related to Cronobacter sakazakii, or Salmonella Newport, in infants who had consumed powder infant formula manufactured in this facility. No Abbott liquid formulas, powder formulas, or nutrition products from other facilities were impacted by the recall. Since February, nutrition specialists have been working with all new and enrolled infants to ensure available product is loaded onto a participant's eWIC card.

The LFCHD program serves roughly **1,400** infants and have been working closely with pediatric offices, as well as those who are medically fragile. Currently, the formula recall is ongoing and the current formula waiver has been extended to Dec. 31, 2022.